



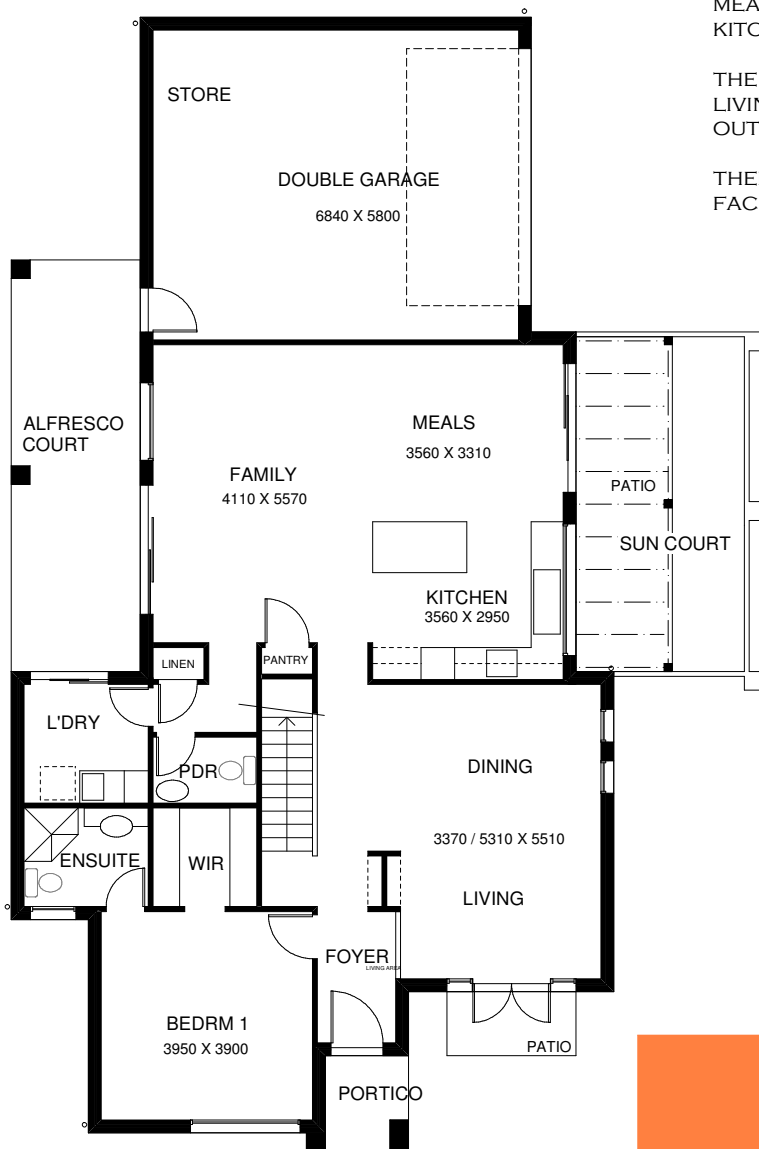
THE ABODE

STREET FACADE

DESIGNED FOR THE CORNER SITE, THE ABODE 270 OFFERS 4 GENEROUS BEDROOMS, EACH WITH BUILT IN ROBES, 2 BATHROOMS WITH A POWDER ROOM TO THE GROUND FLOOR. THERE ARE TWO LIVING ZONES, THE FORMAL LIVING & DINING ROOMS AND THE INFORMAL FAMILY & MEALS CENTRED AROUND THE SPACIOUS GOURMET KITCHEN WITH IT CENTRAL WORK BENCH.

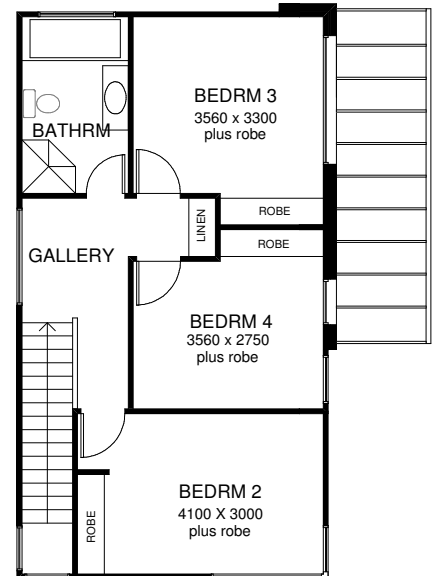
THE ABODE HAS BEEN DESIGNED WITH TWO OUTDOOR LIVING AREAS, THE OPEN SUN COURT WITH A PRIMARY OUTDOOR LIVING AREA OFF THE ALFRESCO COURT.

THERE IS A DOUBLE GARAGE WITH ITS GENEROUS STORAGE FACILITIES, AND SECURED UNDER COVER ACCESS



GROUND FLOOR PLAN

Ground Floor Area	130.00 square metres
First Floor Area	62.80 square metres
Garage Floor Area	45.50 square metres
Pavilion Court	18.40 square metres
Sun Court	11.20 square metres
Portico	2.40 square metres
Total Area	270.30 square metres or 29 Squares



FIRST FLOOR PLAN



Copyright
The Sydney Design Company Pty Limited
ABN 81 054 771 578
T: 1800 468 741
F: 02 9383 8438
E: sydneydesign@bigpond.com.au
W: www.sydneydesigncompany.com.au